

Flared Edge Clamps Light Duty

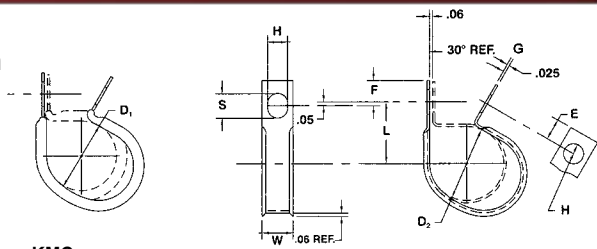
Hot Dipped Galvanized Steel, Chem-Treated G90 Finish, per ASTM A653/A653M, 1/32" Thick Black Vinyl Cushion



Closed Type Furnished Open



This light duty clip has the edges flared around the clamping loop to prevent abrasion from the edges of the steel. It is also made contoured for ease of closing.



D	L	H	W	E	G	F	S	KMC Part Number	Part Number	Lbs. Per. 100 Pcs.	Quantity
Clamping Diameter ±.031	Center To Center ±.031	Hole Diameter ±.005	Width ±.010	Hole Center To End ±.015	Gage ±.002	Slot Center To End ±.015	Slot Length ±.020				
.187	.500	.281	.500	.250	.025	.296	.375	CFV-0409Z1	2021391	.71	50
.250	.531							CFV-0509Z1	2021392	.79	50
.312	.562							CFV-0609Z1	2021393	.89	50
.375	.593							CFV-0709Z1	2021394	.98	50
.437	.625							CFV-0809Z1	2021395	1.08	50
.500	.656							CFV-0909Z1	2021396	1.18	50
.562	.687							CFV-1009Z1	2021397	1.27	50
.625	.718							CFV-1109Z1	2021398	1.37	50
.687	.750							CFV-1209Z1	2021399	1.46	50
.750	.781							CFV-1309Z1	2021400	1.56	50
.812	.812							CFV-1409Z1	2021401	1.66	50
.875	.843							CFV-1509Z1	2021402	1.74	50
.937	.875							CFV-1609Z1	2021403	1.84	50
1.000	.906							CFV-1709Z1	2021404	1.91	50
.187	.531	.343	.562	.281	.025	.328	.437	CFV-0411Z1	2021406	.84	50
.250	.562							CFV-0511Z1	2021407	.90	50
.312	.594							CFV-0611Z1	2021408	.99	50
.375	.625							CFV-0711Z1	2021409	1.08	50
.437	.656							CFV-0811Z1	2021410	1.16	50
.500	.688							CFV-0911Z1	2021411	1.25	50
.562	.719							CFV-1011Z1	2021412	1.34	50
.625	.750							CFV-1111Z1	2021413	1.43	50
.687	.781							CFV-1211Z1	2021414	1.52	50
.750	.812							CFV-1311Z1	2021415	1.61	50
.812	.844							CFV-1411Z1	2021416	1.70	50
.875	.875							CFV-1511Z1	2021417	1.79	50
.937	.906							CFV-1611Z1	2021418	1.88	50
1.000	.938							CFV-1711Z1	2021419	1.97	50
.187	.593	.406	.625	.312	.025	.359	.500	CFV-0413Z1	2021421	1.01	50
.250	.625							CFV-0513Z1	2021422	1.13	50
.312	.656							CFV-0613Z1	2021423	1.19	50
.375	.687							CFV-0713Z1	2021424	1.33	50
.437	.718							CFV-0813Z1	2021425	1.50	50
.500	.750							CFV-0913Z1	2021426	1.62	50
.562	.781							CFV-1013Z1	2021427	1.71	50
.625	.812							CFV-1113Z1	2021428	1.82	50
.687	.843							CFV-1213Z1	2021429	1.91	50
.750	.875							CFV-1313Z1	2021430	2.05	50
.812	.906							CFV-1413Z1	2021431	2.31	50
.875	.937							CFV-1513Z1	2021432	2.45	50
.937	.968							CFV-1613Z1	2021433	2.60	50
1.000	1.000							CFV-1713Z1	2021434	2.80	50

Actual part weights are for reference only and may vary from weights shown. Reference numbers provided as a reference only and do not correspond to part quantities.