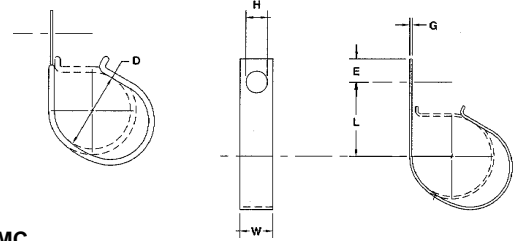


J Clips Open Type Center Mounting Hole

Hot Dipped Galvanized Steel, Chem-Treated G90 Finish, per ASTM A653/A653M, 1/32" Thick Black Vinyl Cushion



J shaped clips are an excellent choice when it is desirable to assemble the clamp and add wiring later. Against a rigid surface, it can be closed easily with a screwdriver blade. The loop portion is contoured.



D	H	L	W	E	G				
Clamping Diameter ±.031	Hole Dia. ±.005	Center To Center ±.031	Width ±.010	Hole Center To End ±.015	Gage ±.002	KMC Part Number	Part Number	Lbs. Per 100 Pcs.	Quantity
.187	.203	.750	.500	.218	.032	CJV-0407Z1	2021926	.89	100
	.281	.781	.500	.250	.032	CJV-0409Z1	2021927	.94	100
	.343	.812	.625	.312	.032	CJV-0411Z1	2021928	1.19	100
	.406	.843	.750	.375	.032	CJV-0413Z1	1857649	1.50	100
.250	.203	.812	.500	.218	.032	CJV-0507Z1	2021929	1.07	100
	.281	.843	.500	.250	.032	CJV-0509Z1	2021930	1.07	100
	.343	.875	.625	.312	.032	CJV-0511Z1	2013544	1.36	100
	.406	.906	.750	.375	.032	CJV-0513Z1	1857653	1.70	100
.312	.203	.875	.500	.218	.032	CJV-0607Z1	2021931	1.21	100
	.281	.906	.500	.250	.032	CJV-0609Z1	1857655	1.21	100
	.343	.937	.625	.312	.032	CJV-0611Z1	2021932	1.54	100
	.406	.968	.750	.375	.032	CJV-0613Z1	2013669	1.89	100
.375	.281	.937	.500	.250	.032	CJV-0709Z1	2021933	1.34	100
	.343	.968	.625	.312	.032	CJV-0711Z1	1993137	1.71	100
	.406	1.000	.750	.375	.032	CJV-0713Z1	1857660	2.07	100
.437	.281	1.000	.500	.250	.032	CJV-0809Z1	2021934	1.47	100
	.343	1.031	.625	.312	.032	CJV-0811Z1	2021935	1.87	100
	.406	1.062	.750	.375	.032	CJV-0813Z1	1995037	2.33	100

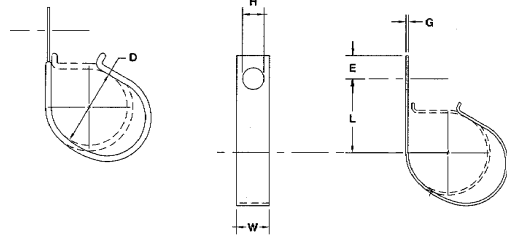
Actual part weights are for reference only and may vary from weights shown.
 Reference numbers provided as a reference only and do not correspond to part quantities.

J Clips Open Type KMC Center Mounting Hole

Hot Dipped Galvanized Steel, Chem-Treated G90 Finish, per ASTM A653/A653M, 1/32" Thick Black Vinyl Cushion



J shaped clips are an excellent choice when it is desirable to assemble the clamp and add wiring later. Against a rigid surface, it can be closed easily with a screwdriver blade. Pliers or fingers can be used for closing if the back is not supported. The loop portion is contoured.



D	H	L	W	E	G				
Clamping Diameter ±.031	Hole Dia. ±.005	Center To Center ±.031	Width ±.010	Hole Center To End ±.015	Gage ±.002	KMC Part Number	Part Number	Lbs. Per 100 Pcs.	Quantity
0.500	0.281	1.062	0.500	0.250	0.032	CJV-0909Z1	2021936	1.60	100
	0.343	1.093	0.625	0.312	0.032	CJV-0911Z1	1857665	2.04	100
	0.406	1.125	0.750	0.375	0.032	CJV-0913Z1	1857666	2.51	100
0.562	0.281	1.125	0.500	0.250	0.048	CJV-1009Z1	2021937	2.51	100
	0.343	1.156	0.625	0.312	0.048	CJV-1011Z1	2021938	3.21	100
	0.406	1.187	0.750	0.375	0.048	CJV-1013Z1	1857669	3.93	100
0.625	0.281	1.187	0.500	0.250	0.048	CJV-1109Z1	2021939	2.72	100
	0.343	1.218	0.625	0.312	0.048	CJV-1111Z1	1992378	3.49	100
	0.406	1.250	0.750	0.375	0.048	CJV-1113Z1	1857039	4.23	100
0.687	0.281	1.250	0.500	0.250	0.048	CJV-1209Z1	2021940	2.91	100
	0.343	1.281	0.625	0.312	0.048	CJV-1211Z1	2021941	3.72	100
	0.406	1.312	0.750	0.375	0.048	CJV-1213Z1	2021942	4.52	100
0.750	0.281	1.250	0.500	0.250	0.048	CJV-1309Z1	2021943	3.11	100
	0.343	1.281	0.625	0.312	0.048	CJV-1311Z1	2021944	3.91	100
	0.406	1.312	0.750	0.375	0.048	CJV-1313Z1	1857677	4.84	100
0.812	0.281	1.312	0.500	0.250	0.048	CJV-1409Z1	2021945	3.32	100
	0.343	1.343	0.625	0.312	0.048	CJV-1411Z1	2021946	4.18	100
	0.406	1.375	0.750	0.375	0.048	CJV-1413Z1	2021947	5.17	100
0.875	0.281	1.375	0.500	0.250	0.048	CJV-1509Z1	2021948	3.30	100
	0.343	1.406	0.625	0.312	0.048	CJV-1511Z1	2021949	4.47	100
	0.406	1.437	0.750	0.375	0.048	CJV-1513Z1	1857683	5.53	100

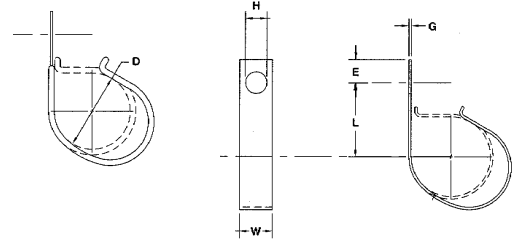
Actual part weights are for reference only and may vary from weights shown. Reference numbers provided as a reference only and do not correspond to part quantities.

J Clips Open Type Center Mounting Hole

Hot Dipped Galvanized Steel, Chem-Treated G90 Finish, per ASTM A653/A653M, 1/32" Thick Black Vinyl Cushion



J shaped clips are an excellent choice when it is desirable to assemble the clamp and add wiring later. Against a rigid surface, it can be closed easily with a screwdriver blade. Pliers or fingers can be used for closing if the back is not supported. The loop portion is contoured.



D	H	L	W	E	G				
Clamping Diameter ±.031	Hole Dia. ±.005	Center To Center ±.031	Width ±.010	Hole Center To End ±.015	Gage ±.002	KMC Part Number	Part Number	Lbs. Per 100 Pcs.	Quantity
0.937	0.281	1.437	0.500	0.250	0.048	CJV-1609Z1	2021950	3.53	100
	0.343	1.468	0.625	0.312	0.048	CJV-1611Z1	2021951	4.78	100
	0.406	1.500	0.750	0.375	0.048	CJV-1613Z1	2021952	5.91	100
1.000	0.281	1.500	0.500	0.250	0.048	CJV-1709Z1	2021953	3.77	100
	0.343	1.531	0.625	0.312	0.048	CJV-1711Z1	2009650	5.11	100
	0.406	1.562	0.750	0.375	0.048	CJV-1713Z1	1857689	6.32	100
1.062	0.281	1.562	0.500	0.250	0.048	CJV-1809Z1	2021954	4.03	100
	0.343	1.593	0.625	0.312	0.048	CJV-1811Z1	2021955	5.46	100
	0.406	1.625	0.750	0.375	0.048	CJV-1813Z1	2021956	6.76	100
1.125	0.281	1.625	0.500	0.250	0.048	CJV-1909Z1	2021957	4.31	100
	0.343	1.656	0.625	0.312	0.048	CJV-1911Z1	2021958	5.84	100
	0.406	1.687	0.750	0.375	0.048	CJV-1913Z1	2021959	7.23	100
1.187	0.281	1.687	0.500	0.250	0.048	CJV-2009Z1	2021960	4.61	100
	0.343	1.718	0.625	0.312	0.048	CJV-2011Z1	2021961	6.25	100
	0.406	1.750	0.750	0.375	0.048	CJV-2013Z1	2021962	7.59	100
1.250	0.281	1.750	0.500	0.250	0.048	CJV-2109Z1	2021963	4.93	100
	0.343	1.781	0.625	0.312	0.048	CJV-2111Z1	2021964	6.68	100
	0.406	1.812	0.750	0.375	0.048	CJV-2113Z1	1857701	7.97	100
1.312	0.281	1.812	0.500	0.250	0.048	CJV-2209Z1	2021965	5.28	100
	0.343	1.843	0.625	0.312	0.048	CJV-2211Z1	2021966	7.15	100
	0.406	1.875	0.750	0.375	0.048	CJV-2213Z1	2021967	8.37	100

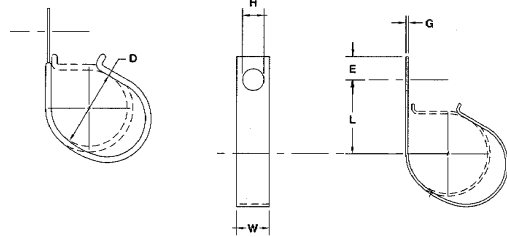
Actual part weights are for reference only and may vary from weights shown.
 Reference numbers provided as a reference only and do not correspond to part quantities.

J Clips Open Type Center Mounting Hole

Hot Dipped Galvanized Steel, Chem-Treated G90 Finish, per ASTM A653/A653M, 1/32" Thick Black Vinyl Cushion



J shaped clips are an excellent choice when it is desirable to assemble the clamp and add wiring later. Against a rigid surface, it can be closed easily with a screwdriver blade. Pliers or fingers can be used for closing if the back is not supported. The loop portion is contoured.



D	H	L	W	E	G				
Clamping Diameter ±.031	Hole Dia. ±.005	Center To Center ±.031	Width ±.010	Hole Center To End ±.015	Gage ±.002	KMC Part Number	Part Number	Lbs. Per 100 Pcs.	Quantity
1.375	0.281	1.875	0.500	0.250	0.048	CJV-2309Z1	2021968	5.65	100
	0.343	1.906	0.625	0.312	0.048	CJV-2311Z1	2021969	7.65	100
	0.406	1.937	0.750	0.375	0.048	CJV-2313Z1	2021970	8.95	100
1.500	0.281	2.000	0.500	0.250	0.048	CJV-2509Z1	2021971	6.04	50
	0.343	2.031	0.625	0.312	0.048	CJV-2511Z1	2021972	8.18	50
	0.406	2.062	0.750	0.375	0.048	CJV-2513Z1	2021973	9.58	50
1.625	0.281	2.125	0.500	0.250	0.048	CJV-2709Z1	2021974	6.46	50
	0.343	2.156	0.625	0.312	0.048	CJV-2711Z1	2021975	8.76	50
	0.406	2.187	0.750	0.375	0.048	CJV-2713Z1	2021976	10.25	50
1.750	0.281	2.250	0.500	0.250	0.048	CJV-2909Z1	2021977	6.92	50
	0.343	2.281	0.625	0.312	0.048	CJV-2911Z1	2021978	9.37	50
	0.406	2.312	0.750	0.375	0.048	CJV-2913Z1	2021979	10.97	50
2.000	0.281	2.500	0.500	0.250	0.048	CJV-3309Z1	2021980	7.41	50
	0.343	2.531	0.625	0.312	0.048	CJV-3311Z1	2018141	10.02	50
	0.406	2.562	0.750	0.375	0.048	CJV-3313Z1	2021981	11.73	50

Actual part weights are for reference only and may vary from weights shown. Reference numbers provided as a reference only and do not correspond to part quantities.