

Hex Head Cap Screws- Large Diameter

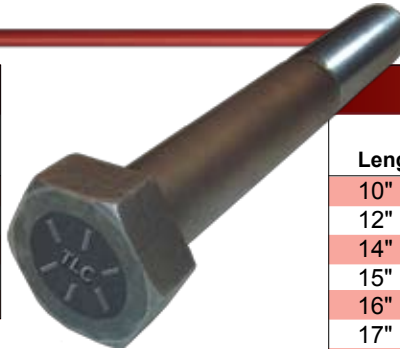
Grade 8 Plain Finish



Coarse Thread. Alloy steel, quenched and tempered in accordance with SAE J429 material requirements and ANSI/ANSI B18.2.1 dimensional tolerances.

Large diameter nuts available below.

1 1/4 - 7			
Length	Part Number	Lbs. Per Piece	Package Quantity
12"	2019655	4.657	1
14"	1031598	5.349	1
16"	2019656	6.041	1
18"	2019657	6.733	1
24"	2019658	8.809	1



1 1/2 - 6			
Length	Part Number	Lbs. Per Piece	Package Quantity
10"	1037458	5.893	1
12"	2017728	6.891	1
14"	2019666	7.889	1
15"	2019667	8.388	1
16"	2019668	8.887	1
17"	2019669	9.386	1
18"	2019670	9.885	1
20"	2019671	10.883	1
24"	2019672	12.879	1

Hex Head Cap Screws- Large Diameter

Grade 5 Plain Finish



Coarse Thread. Medium carbon steel, quenched and tempered in accordance with SAE J429 material requirements and ANSI/ASME B18.2.1 dimensional tolerances.

1 1/4 - 7			
Length	Part Number	Lbs. Per Piece	Package Quantity
12"	2009229	4.657	1
14"	2019651	5.349	1
16"	2019652	6.041	1
18"	2019653	6.733	1
24"	2019654	8.809	1

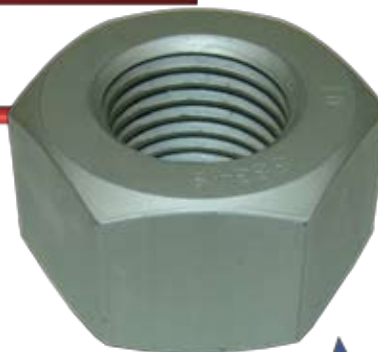
1 1/2 - 6			
Length	Part Number	Lbs. Per Piece	Package Quantity
10"	1037455	5.893	1
12"	1037535	6.891	1
14"	2019659	7.889	1
15"	2019660	8.388	1
16"	2019661	8.887	1
17"	2019662	9.386	1
18"	2019663	9.885	1
20"	2019664	10.883	1
24"	2019665	12.879	1

Finished Hex Nuts- Large Dia.

Grade 8/ASTM A194 2H Plain Finish

Coarse Thread. Alloy steel, quenched and tempered in accordance with SAE J429 material requirements and ANSI/ANSI B18.2.1 dimensional tolerances.

Size	Part Number	Lbs. Per Piece	Package Quantity
1 1/4 - 7	1301388	0.543	10
1 1/2 - 6	1301468	0.943	5
1 3/4 - 5	1301548	1.510	1
2 - 4 1/2	1301628	2.240	1



Reference numbers and part weights are provided as a reference only. Actual part weight may vary from weights shown.

Hex Head Cap Screws- Large Diameter

A354BD Plain Finish



Large diameter nuts on previous page.

Coarse Thread. Alloy steel, quenched and tempered in accordance with ASTM A354 Grade BD material requirements and ANSI/ANSI B18.2.1 dimensional tolerances. Compatible with UNC grade 8 hex nuts, all metal lock nuts or nylon insert locknuts. USS or SAE hardened flat washers as well as helical spring lock washers may also be used with these cap screws for a complete assembly.

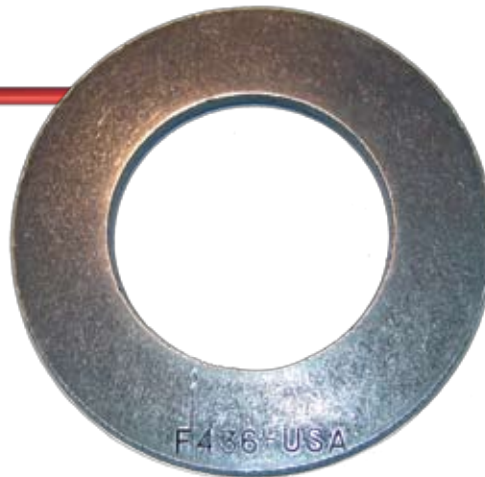
1 3/4 - 5			
Length	Part Number	Lbs. Per Piece	Package Quantity
10"	2019673	8.226	1
12"	2019674	9.582	1
15"	2019675	11.616	1
16"	2019676	12.294	1
18"	2019677	13.650	1
20"	2019678	15.006	1

2 - 4 1/2			
Length	Part Number	Lbs. Per Piece	Package Quantity
10"	1095458	10.966	1
12"	2019679	12.738	1
16"	2019680	16.282	1
24"	2019681	23.370	1

Hardened Flat Washers- Large Diameter

F436 Plain Finish

Size	Part Number	Lbs. Per 100 Pcs.	Package Quantity
1 1/4	1518142	0.1512	10
1 1/2	1518162	0.2205	10
1 3/4	1518182	0.3273	5
2	2019682	0.3968	1



Reference numbers and part weights are provided as a reference only.
 Actual part weight may vary from weights shown.